

Midwest Cardiovascular Research Foundation (MCRF)

MCRF is a non-profit regional education and research organization



Defining the future of cardiovascular care through research and education



Midwest Cardiovascular
Research Foundation

Mission Statement

MCRF's mission is to prolong and improve the quality of life in the communities we serve by conducting and disseminating findings of high quality cardiovascular clinical research.



Vision Statement

*MCRF's vision for the Midwest is a consortium of
Investigators capable of:*

- 1. developing and/or conducting innovative and cutting-edge cardiovascular clinical trials and*
- 2. performing regional educational activities for health care personnel and the general public, educating persons on the recognition, treatment and prevention of cardiovascular disease.*



MCRF is ...

A Clinical Investigators Network
conducting investigator-initiated
and sponsor-initiated trials

A Contract Research Organization

An Educational Center for Health
care professionals and the Public



Midwest Cardiovascular
Research Foundation

Clinical Investigators

1. MCRF is made of Investigators from the Midwest selected based on their research experience and willingness to contribute to the foundation mission and vision. Investigators should have at least 2 years experience in clinical research
2. Investigators are classified as **Contracting Investigators** (heavily involved in the administrative aspect of the Foundation and are under a specific contractual agreement with the foundation) OR **Associate Investigators** (members of the Foundation with primary focus is research and educational activities)



Governance

MCRF is governed by a Board of Directors made of

1. At least 2 and a maximum of 12 investigators (contractual or Associate). The President of MCRF serves as the chairman of the board. Board members have no term limit on the board but they have to be reelected every 2 years. Board members can be nominated by the Research Director, Founder, or any current board member
2. The President
3. The Research Director
4. The Founder



Functions of the Board of Directors

- Reviews research projects and educational activities to determine whether they meet the overall mission and financial viability of MCRF and recommends their acceptance to the Research Director
- Oversees the financial and operational aspects of MCRF
- Oversees the progress of MCRF (research and education)
- Oversees quality issues related to the research and the educational programs offered by MCRF as well as the operational aspect
- Recommends future directions of MCRF (strategic planning)
- Oversees committees' functions

The Board meets at least twice a year.



Scientific Advisory Board

A Scientific **Advisory Board** to MCRF is selected by the Board of Directors by a simple majority of votes. Advisors will be selected for their reputable expertise in various areas of Cardiovascular Medicine and Surgery and for other expertise needed by the Foundation.



Participating Sites

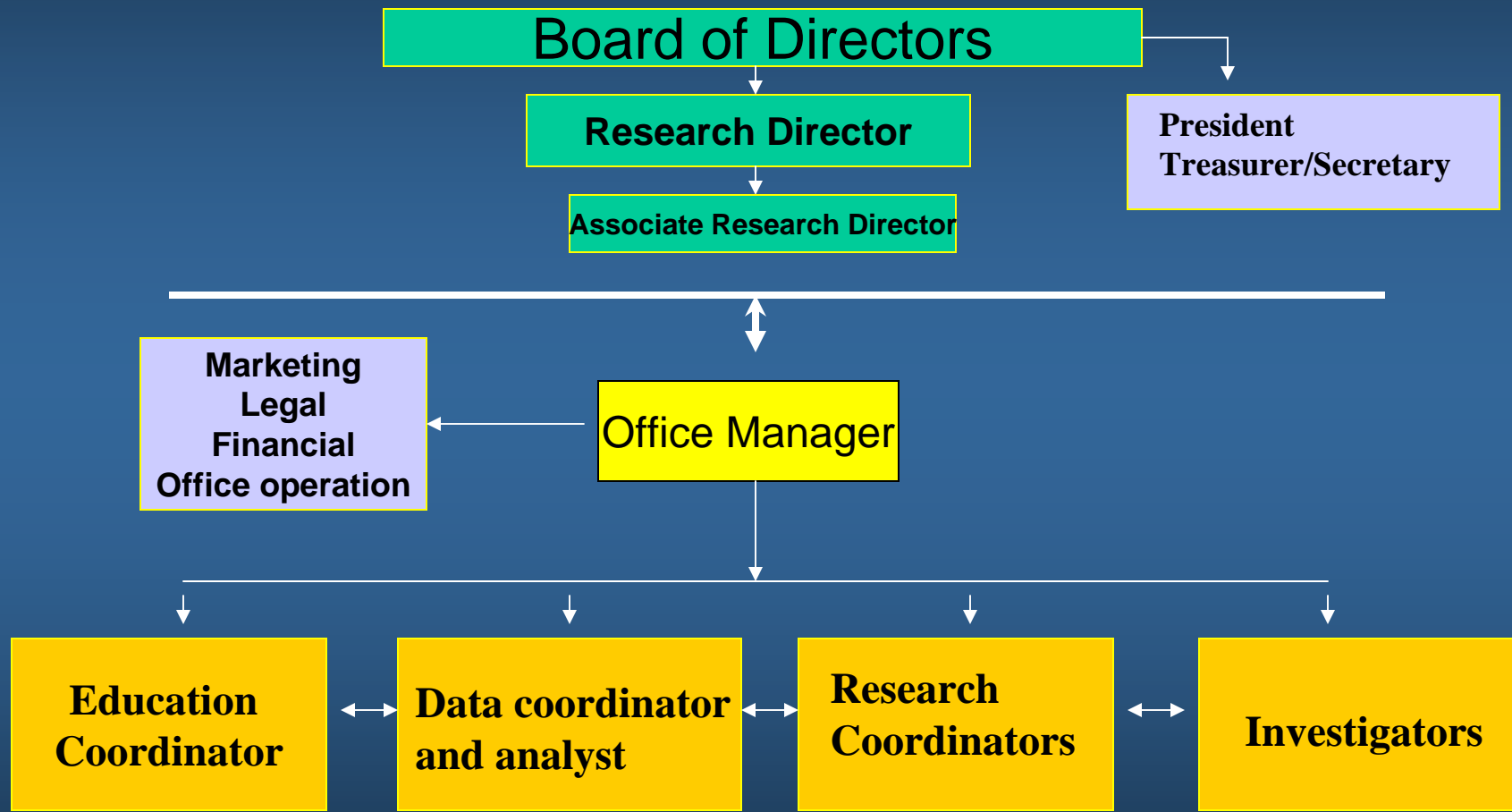
MCRF continues to actively build a “**participating sites**” database.

Participating sites will be invited by MCRF to join in conducting a specific project.

Participating sites have no representation on the Board of MCRF and have to qualify for a specific project based on their resources and the patient population they represent.



ORGANIZATIONAL CHART OF MCRF



MCRF is very competitive...

- 1. Single point of contact for sponsors**
- 2. Management of expenses and negotiating site payments with sponsors is more efficient**
- 3. Have focused and experienced study coordinators**
- 4. Trial selection to minimize competition between trials and maximize patient enrollment**
- 6. Electronic data acquisition supported by Shared-IT**
- 7. Web page support**
- 8. Operated by investigators with least bureaucracy possible**



MCRF is fun and provides a potential for individual growth !!!

Intellectual stimulation

Camaraderie and friendship

Give back what is missing from our practices

**Transform competition to a more fulfilling
cooperation**

**Offers the chance for a rapid professional growth
with cross-publishing and a rapid
dissemination of scientific findings**



MCRF now...

MCRF occupies currently an office at Lombard St in Davenport, Iowa, newly rebuilt that can house 8 coordinators, a receptionist, an office manager, Education/Grant director, research director, a conference room, kitchenette, server room, locked drug and device room, and at least 1000 square foot of secure storage area for CRF binders (a total of about 2700 square foot)

MCRF has a local computer network served by IT and a dedicated web page which has been developed as an educational and marketing vehicle and a way to acquire data online from all over the US. e.g. peripheral vascular Registry



MCRF now...

MCRF currently has the following: Office, team of employees (administrators, investigators and coordinators) and all electronic needs. It has developed the CIPG annual conference, special projects (Learn About Your Heart ..Made Simple, CIPG 2004 book), Clinical Research Conference and coordinators training manual and has established very detailed policies and procedures for its operation all well within IRS and FDA rules.

MCRF has a team of consultants including legal, accounting, biostatistics, advisors, IT support...

MCRF has published already over 30 manuscripts and abstracts, 2 books and 2 book chapters since its public release in Nov of 2003. Its investigators have been on national panels of some high profile conferences such as NCVH, VDS and so forth. It has been featured in local and national publications.



MCRF values...

We believe in an inverted pyramid...In other words we rely significantly on a dedicated staff to move us forward

MCRF is strongly guided by its mission and vision

MCRF provides the community and the health service professionals with cutting-edge technology and with emphasis on guidelines

MCRF operates within strict IRS and FDA rules and within its corporate policies.

MCRF operates as an independent entity with a highly focused identity. MCRF works with all other organizations with no bias. We currently work with Genesis, Trinity, CVM, CGH and so forth.



Why should I be An Associate Investigator?

It is free and you have no financial obligation to participate

Associate members are able to bring their trials thru MCRF and take advantage of an already built machinery to conduct research

Associate members are paid for services rendered to the foundation including research. Payment is intended to cover time spent in conducting research

Associate members with 2 actively enrolling trials thru the foundation have access to the Education fund

Associate members can become board members with a significant influence on the foundation future growth and strategies

Associate Members are invited to be involved in all activities and projects of the foundation including specific projects, conferences, publications and so forth



Welcome to MCRF



Midwest Cardiovascular
Research Foundation